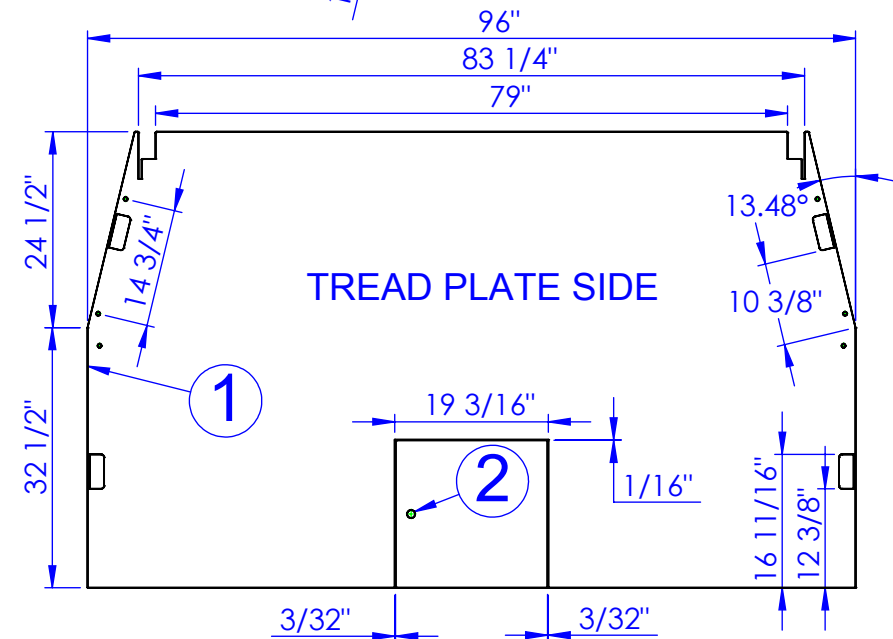
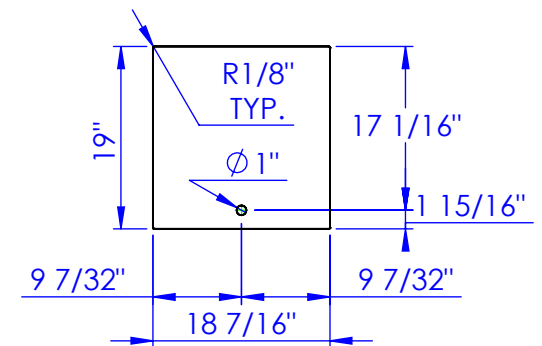
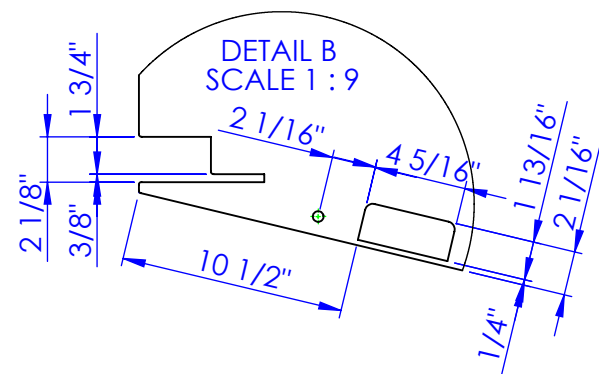
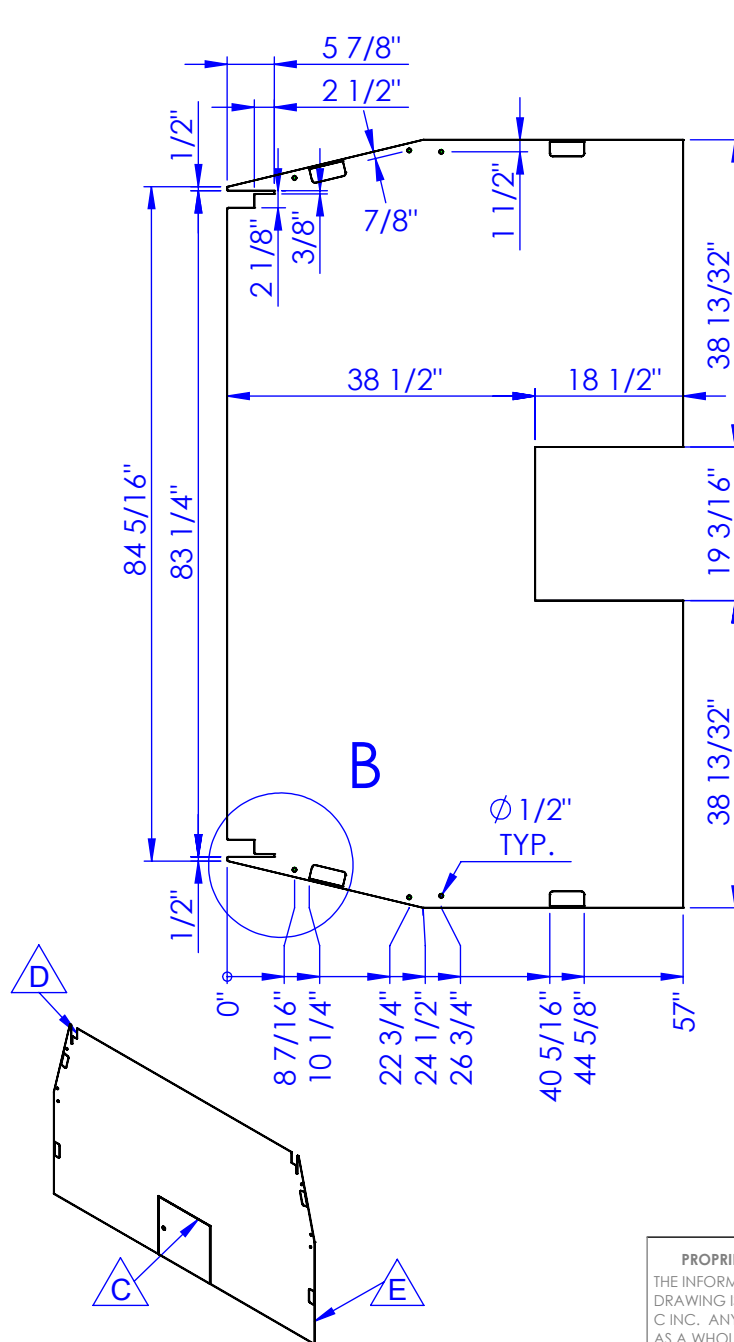


ITEM NO.	PART NUMBER	DESCRIPTION	MATERIAL	QTY.
1	FP-APEX-251	FRONT FLOOR 251 PS	1/8" FLOOR PLATE	1
2	FP-PS-FLPL-LID	FLOOR PLATE LID APEX, PS	1/8" FLOOR PLATE	1

REV.	DESCRIPTION	DATE	APPROVED
C	REV. STAKE PKIS	12/12/2011	
D	REV. HEADACHE RACK SLOT TO 2-1/8" WIDE	12/30/2011	
E	REMOVED BOTTOM 2 1/2" HOLES	4/9/2012	



NOTE:
1. EDGES MUST BE COMMON BETWEEN FLOOR & DOOR. TO INSURE PATTERN MATCH AT ASSEMBLY.

PROPRIETARY AND CONFIDENTIAL
THE INFORMATION CONTAINED IN THIS DRAWING IS THE SOLE PROPERTY OF TRIPLE C INC. ANY REPRODUCTION IN PART OR AS A WHOLE WITHOUT THE WRITTEN PERMISSION OF TRIPLE C INC. IS PROHIBITED.

DIMENSIONS ARE IN INCHES TOLERANCES: FRACTIONAL $\pm 1/16$ ANGULAR: MACH ± 1 BEND \pm TWO PLACE DECIMAL ± 010 THREE PLACE DECIMAL ± 005	
MATERIAL	1/8" FLOOR PLATE
DO NOT SCALE DRAWING	

NAME	DATE
DRAWN	HEATH 12/12/12
PART #	FP-APEX-251
ASM #	
COMMENTS:	
FRONT FLOOR, 250	

P.O. BOX 248, SABETHA, KS 66534	
TRIPLE C INC.	
SIZE A	DWG. NO. 00-2212 E
SCALE: 1:24	WEIGHT:
SHEET 1 OF 1	

REV.
E